

## DS-2CD6362F-I(S)(V)

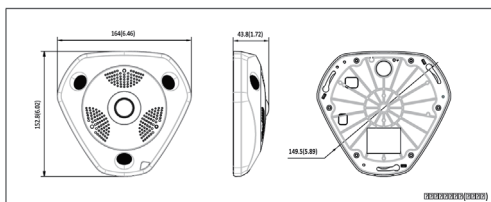
### 6MP Fisheye Network Camera



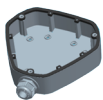
#### Key features

- 1/1.8" progressive scan CMOS
- 6 mega-pixel image sensor
- Up to 3072 x 2048 real-time streaming
- 360° view angle
- Multiple viewing modes
- Multiple ePTZ streams with preset and patrol functions
- Ceiling, Wall or Table mount modes
- Up to 10m IR range
- Audio/Alarm IO optional/RS485 (-S)
- Outdoor version optional (-V)

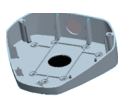
#### Dimensions



#### Accessories



DS-1280ZJ-DM25  
Junction box



DS-1281ZJ-DM25  
Inclined ceiling mount



DS-1273ZJ-DM25  
Wall mount



DS-1271ZJ-DM25  
Pendant mount

#### Available models

DS-2CD6362F-I, DS-2CD6362FD-IS  
DS-2CD6362F-IV, DS-2CD6362F-IVS

\* -S: Audio/Alarm, RS 485 interface optional

\* -V: IP66, Vandal-proof optional

DS-2CD6362F-I(S)(V)	
<b>Camera</b>	
Image Sensor	1/1.8" progressive scan CMOS
Min. Illumination	0.05 lux @ (F1.2, AGC ON) 0.3 lux @ (F2.8, AGC ON ) 0 lux with IR
Shutter Speed	1/25 (1/30)s ~ 1/100,000s
Lens	1.27mm @F2.8, angle of view: 360°
Lens mount	M12
Day & Night	ICR
<b>Compression Standard</b>	
Video Compression	H.264/MJPEG
H.264 Type	Baseline Profile / Main Profile / High Profile
Video Bit Rate	32 Kbps – 16 Mbps
Audio Compression	G.711/G.726/MP2L2
Audio Bit Rate	64Kbps (G.711) / 16Kbps (G.726) / 64Kbps (MP2L2)
<b>Image</b>	
Max. Resolution	3072 x 2048
Frame Rate	High-frame Mode: support 50Hz: 1 x fisheye (3072 x 2048, 25fps) or (2048 x 2048, 25fps) or 4 x PTZ at (1024 x 768, 30fps) 60Hz: 1 x fisheye (3072 x 2048, 25fps) or (2048 x 2048, 30fps) or 4 x PTZ at (1024 x 768, 30fps) Multi-channel Mode: support 50Hz: 1 x fisheye (1280 x 1280, 12.5fps) and 1 x panoramic (2048 x 1536, 12.5fps) and 3 x PTZ (1024 x 768, 12.5fps) 60Hz: 1 x fisheye (1280 x 1280, 15fps) and 1 x panoramic (2048 x 1536, 15fps) and 3 x PTZ (1024 x 768, 15fps)
Number of Streams	High Frame Rate Mode: 1 or 4 Multi-Channel: up to 5 (No sub-streams)
Digital Noise Reduction	3D DNR
Wide Dynamic Range	Digital WDR
Image Setting	Saturation, Brightness, Contrast, Hue, Sharpness, AGC, White Balance
High Light Compensation	Support
Day/night Switch	Auto / Manual / Scheduled / Alarm trigger
<b>Network</b>	
Network Storage	NAS, SAMB / CIFS
Alarm trigger	Motion detection, dynamic analysis, tamper alarm, network disconnect, IP address conflict, storage full, storage error
Protocols	TCP/IP, ICMP, HTTP, HTTPS, FTP, DHCP, DNS, DDNS, RTP, RTSP, RTCP, PPPoE, NTP, UPnP, SMTP, SNMP, IGMP, 802.1X, QoS, IPv6, Bonjour
Security	User Authentication, Watermark, IP address filtering, Anonymous access
Standard	ONVIF, PSIA, CGI
<b>Interface</b>	
Audio Input	1-ch 3.5 mm audio interface, Mic in/Line in. built-in Microphone
Audio Output	1-ch 3.5 mm audio interface
Communication Interface	1 RJ45 10M/100M/1000M Ethernet port 1 RS-485 interface (-S)
Alarm Input	1
Alarm Output	1
On-board storage	Built-in Micro SD/SDXC slot, up to 64 GB
<b>General</b>	
Operating Conditions	-30 °C – 60 °C (-22 °F – 140 °F) Humidity 95% or less (non-condensing)
Power Supply	DC12V±10% / PoE
Power Consumption	Max. 11W
IR range	Max. 10m
Protection	IEC 60068-2-75 test, Eh, 50J; EN 50102, EN50155, IK10 (-V)
Dimensions	164 x 152.8 x 43.8mm (6.46" x 6.02" x 1.72")
Weight	1400g